

Natural changes of population 1961 – 2022

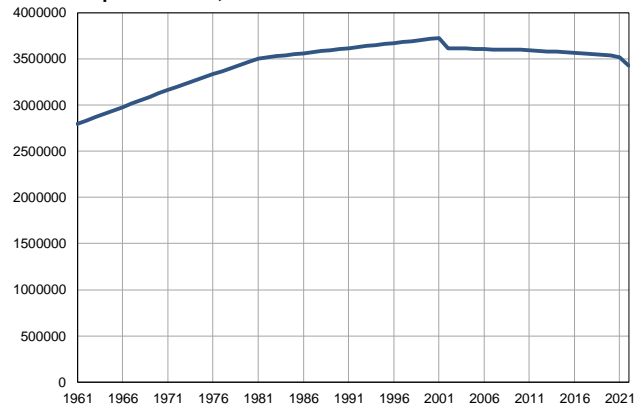
Profile
July 2023

SERBIA - NORTH

	1961	2022
Population size	2797161	3428249
Livebirths, Number	46788	34317
Deaths, Number	23930	53214
Natural increase, Number	22858	-18897
Infants deaths, Number	3059	143
Livebirths, per 1,000 population	17	10
Deaths, per 1,000 population	9	16
Natural increase, per 1,000 population	8	-6
Infants deaths, per 1,000 livebirths	65	4

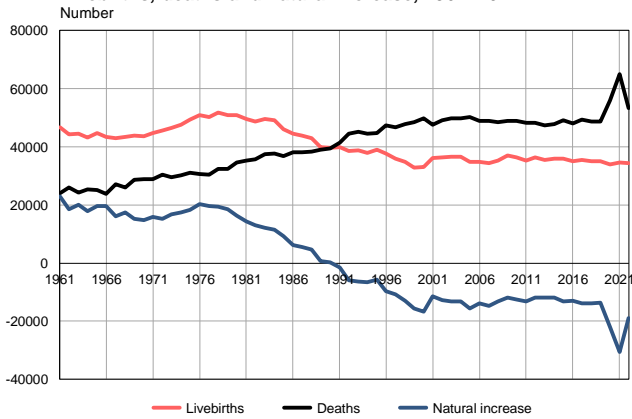
Source: Vital Statistics, SORS

Population size, 1961–2022



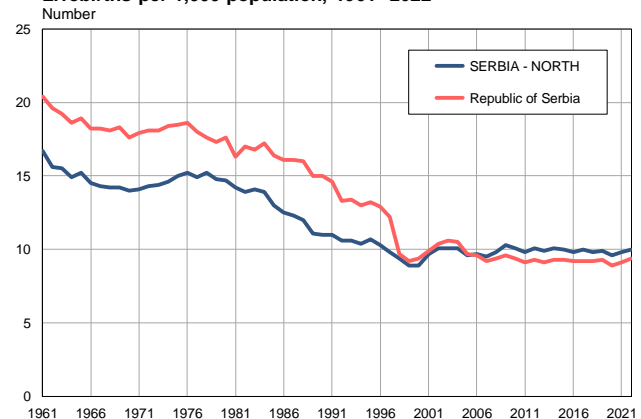
Source: Vital Statistics, SORS

Livebirths, deaths and natural increase, 1961–2022



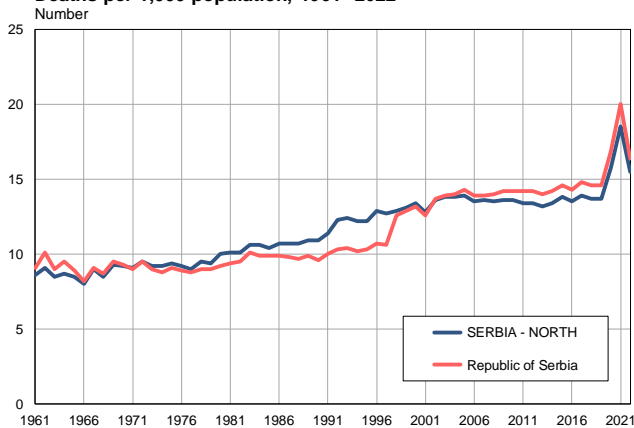
Source: Vital Statistics, SORS

Livebirths per 1,000 population, 1961–2022



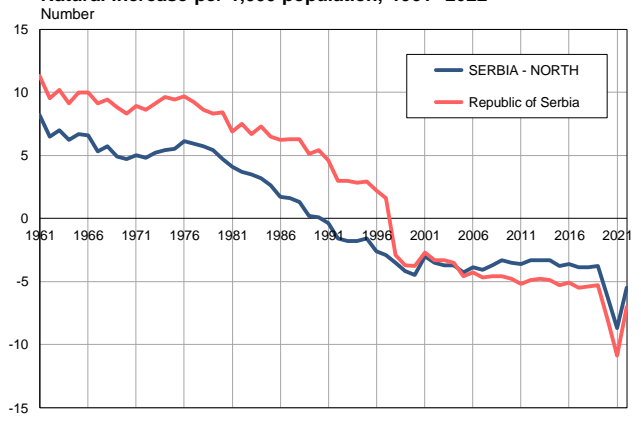
Source: Vital Statistics, SORS

Deaths per 1,000 population, 1961–2022



Source: Vital Statistics, SORS

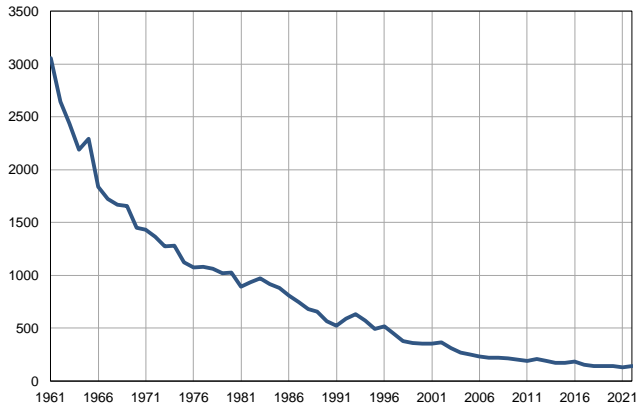
Natural increase per 1,000 population, 1961–2022



Source: Vital Statistics, SORS

Infants deaths, 1961–2022

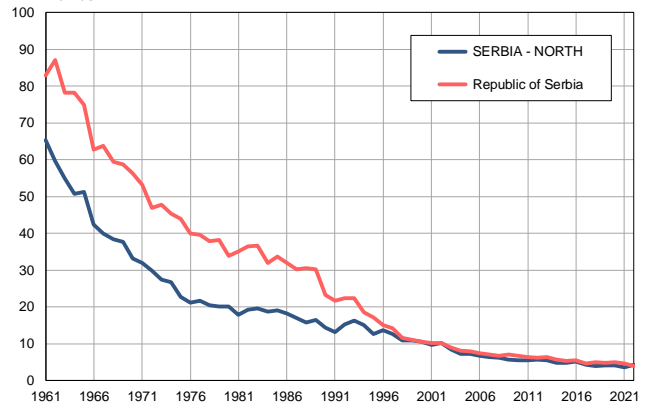
Number



Source: Vital Statistics, SORS

Infants deaths per 1,000 livebirths, 1961–2022

Number



Source: Vital Statistics, SORS

Table. Natural changes of population, SERBIA - NORTH

Year	Number of population	Livebirths	Deaths	Natural increase	Infants deaths	per 1000 population			Infant deaths per 1000 livebirths
						Livebirths	Deaths	Natural increase	
1961	2797161	46788	23930	22858	3059	16.7	8.6	8.2	65.4
1962	2833637	44342	25923	18419	2645	15.6	9.1	6.5	59.6
1963	2870114	44412	24268	20144	2437	15.5	8.5	7.0	54.9
1964	2906589	43204	25319	17885	2190	14.9	8.7	6.2	50.7
1965	2943066	44704	25086	19618	2292	15.2	8.5	6.7	51.3
1966	2979541	43324	23724	19600	1837	14.5	8.0	6.6	42.4
1967	3016016	43064	27030	16034	1721	14.3	9.0	5.3	40.0
1968	3052493	43467	26079	17388	1665	14.2	8.5	5.7	38.3
1969	3088968	43926	28639	15287	1658	14.2	9.3	4.9	37.7
1970	3125444	43601	28826	14775	1447	14.0	9.2	4.7	33.2
1971	3161920	44720	28796	15924	1433	14.1	9.1	5.0	32.0
1972	3196214	45712	30498	15214	1362	14.3	9.5	4.8	29.8
1973	3230507	46406	29561	16845	1274	14.4	9.2	5.2	27.5
1974	3264801	47665	30198	17467	1278	14.6	9.2	5.4	26.8
1975	3299093	49341	31096	18245	1124	15.0	9.4	5.5	22.8
1976	3333392	50819	30547	20272	1075	15.2	9.2	6.1	21.2
1977	3367682	50183	30476	19707	1082	14.9	9.0	5.9	21.6
1978	3401975	51837	32438	19399	1062	15.2	9.5	5.7	20.5
1979	3436268	50971	32470	18501	1022	14.8	9.4	5.4	20.1
1980	3470562	50958	34601	16357	1026	14.7	10.0	4.7	20.1
1981	3504855	49642	35329	14313	890	14.2	10.1	4.1	17.9
1982	3515981	48752	35636	13116	935	13.9	10.1	3.7	19.2
1983	3527107	49671	37430	12241	970	14.1	10.6	3.5	19.5
1984	3538233	49071	37676	11395	919	13.9	10.6	3.2	18.7
1985	3549358	45976	36768	9208	878	13.0	10.4	2.6	19.1
1986	3560487	44402	38201	6201	809	12.5	10.7	1.7	18.2
1987	3571612	43783	38193	5590	747	12.3	10.7	1.6	17.0
1988	3582737	42954	38252	4702	677	12.0	10.7	1.3	15.7
1989	3593862	39803	39056	747	654	11.1	10.9	0.2	16.4
1990	3604989	39640	39365	275	566	11.0	10.9	0.1	14.3
1991	3616115	39877	41373	-1496	523	11.0	11.4	-0.4	13.1
1992	3627143	38545	44495	-5950	586	10.6	12.3	-1.6	15.2
1993	3638171	38703	45074	-6371	632	10.6	12.4	-1.8	16.3
1994	3649198	37833	44419	-6586	571	10.4	12.2	-1.8	15.1
1995	3660228	39089	44763	-5674	491	10.7	12.2	-1.6	12.6
1996	3671254	37676	47349	-9673	515	10.3	12.9	-2.6	13.7
1997	3682284	35929	46658	-10729	451	9.8	12.7	-2.9	12.6
1998	3693310	34881	47784	-12903	375	9.4	12.9	-3.5	10.8
1999	3704338	32868	48545	-15677	356	8.9	13.1	-4.2	10.8
2000	3715366	33116	49834	-16718	351	8.9	13.4	-4.5	10.6
2001	3726395	36204	47542	-11338	351	9.7	12.8	-3.0	9.7
2002	3613215	36372	49127	-12755	367	10.1	13.6	-3.5	10.1
2003	3612062	36581	49786	-13205	310	10.1	13.8	-3.7	8.5
2004	3611517	36482	49757	-13275	268	10.1	13.8	-3.7	7.3
2005	3609837	34785	50279	-15494	252	9.6	13.9	-4.3	7.2

Table. Natural changes of population, SERBIA - NORTH

Year	Number of population	Livebirths	Deaths	Natural increase	Infants deaths	per 1000 population			Infant deaths per 1000 livebirths
						Livebirths	Deaths	Natural increase	
2006	3605459	34904	48817	-13913	233	9.7	13.5	-3.9	6.7
2007	3602840	34267	48999	-14732	219	9.5	13.6	-4.1	6.4
2008	3600785	35339	48494	-13155	218	9.8	13.5	-3.7	6.2
2009	3598938	37053	48934	-11881	213	10.3	13.6	-3.3	5.7
2010	3597090	36407	48965	-12558	202	10.1	13.6	-3.5	5.5
2011	3591096	35148	48245	-13097	191	9.8	13.4	-3.6	5.4
2012	3586235	36294	48195	-11901	207	10.1	13.4	-3.3	5.7
2013	3581647	35457	47323	-11866	190	9.9	13.2	-3.3	5.4
2014	3576978	35962	47881	-11919	172	10.1	13.4	-3.3	4.8
2015	3571596	35889	49179	-13290	172	10.0	13.8	-3.8	4.8
2016	3565319	35074	48037	-12963	182	9.8	13.5	-3.6	5.2
2017	3558647	35564	49402	-13838	151	10.0	13.9	-3.9	4.2
2018	3552056	34986	48723	-13737	137	9.8	13.7	-3.9	3.9
2019	3546149	35138	48745	-13607	143	9.9	13.7	-3.8	4.1
2020	3535332	33849	55920	-22071	138	9.6	15.8	-6.2	4.1
2021	3514649	34540	65043	-30503	126	9.8	18.5	-8.7	3.6
2022	3428249	34317	53214	-18897	143	10.0	15.5	-5.5	4.2

Source: Vital Statistics, SORS

Definitions

Population size

Number of population in the respective year. The data on the number of population in 1961, 1971, 1981 and 1991 are census data, while for the inter-census years the number of population was calculated as an average inter-census difference. From 2002 are given the population estimates that were calculated according to the census of population results and the annual statistics of natural mechanical population movements.

Livebirths

Absolute number of live births in the course of a year. Live born child means a child giving vital signs after birth (breathing, i.e. heartbeat), even for the shortest time, regardless the mother's pregnancy duration.

Deaths

Absolute number of deaths in the course of a year. Deceased is a person that whenever after having been born live, shows permanently stopped vital signs.

Natural increase

Natural population increase is the number of live births minus the number of deaths.

Infants deaths

Absolute number of infants deaths in the course of a year. Deceased infant is a child that after having been born live and before aged one year, shows permanently stopped vital signs.

Livebirths, per 1 000 population

Livebirths rate is the ratio of the number of live births and the population size in the respective year. The number of live births is divided by the population size and then multiplied by 1000.

Deaths, per 1 000 population

General mortality rate represents the ratio between the number of deaths and the population size in the respective year. The number of deaths is divided by population size and then multiplied by 1000.

Natural increase, per 1 000 population

Natural population increase rate is the difference between the number of live births and the number of deaths, in relation to the population size in the respective year.

Natural population increase rate = (number of live births - number of deaths) / population size * 1000

Infants deaths, per 1 000 livebirths

Infant mortality rate is the ratio of deceased children under 1 year of age and live births in the respective year. The mortality rate is expressed per 1000 live births.

Infant mortality rate = (number of deceased children under 1 year of age / number of live births) * 1000

Additional info:



Download all database data in Excel format:

[Data](#)



DevInfo profiles:

devinfo.stat.gov.rs/SerbiaProfileLauncher/?lang=en



DevInfo online database:

devinfo.stat.gov.rs/vitalna



For additional information or questions please contact:

devinfo@stat.gov.rs